

**Myers-Davis Life Coaching**  
**Batesville, Arkansas**  
**(870) 569-1052**

**Summer 2025**







Madison Morris,  
Amy Wood, Diane  
Maples

**PERSON WE SUPPORT & DIRECT  
SUPPORT PROFESSIONALS OF THE  
QUARTER**



# THE MD QUARTERLY NEWS REPORT



Myers-Davis Life Coaching was established in 2014. Founded by Angela Davis & Dr. Edward Myers, the agency is still owned and operated by it's wonderful founders. Angela is a lifelong resident of Batesville where she resides with her husband Mark and dog, Jules. Doc is a Texas native, later moving to Searcy where he spent decades professing at Harding University.

Together, they formed an organization that began as Life Coaching, Business Consulting, and Leadership Training and is now dedicated to **serving the Disability Community**. Myers-Davis serves the entire state of Arkansas in many of its programs and has offices in Jonesboro, Highland, Cabot, and Farmington alongside the main office in Batesville. Myers-Davis Life Coaching and Disability Services' overall mission is to build authentic relationships by being genuine, encouraging, and respectful so that others are uplifted, valued, and empowered to be the best they can be. We provide and coordinate educational training, programs, direction, and support services for individuals with disabilities and their families. We strive to provide quality services that range from home community-based support, workforce advocacy/training, and secondary school-based life skills/vocational readiness. It is our passion to empower those who need it, foster independence, and promote achievement of both career and education so that those with disabilities may live more productive and more independent lives.

**We are currently seeking Direct Support Professionals in many areas of the state. Contact us to find out about positions available in your area.**

**870-569-1052**



# THE MD QUARTERLY NEWS REPORT



## CES Waiver

Arkansas Medicaid Waiver is a program used to provide supports to people with intellectual and developmental disabilities in the home and community-based settings rather than an institution. "Waiver" offers many different services to approved individuals such as supportive living services, supplemental supports, respite care, crisis intervention, community transition services, consultation services, specialized medical supplies, durable medical equipment and employment services. A person must have a qualifying diagnosis before the age of 22 to be eligible for Waiver & will be placed on the Waiver waitlist.

Myers-Davis currently serves about **625 Medicaid Waiver members** across the entire state of Arkansas. Visit our website at:

<https://myersdavis.com/ces-waiver-services>

or the Department of Human Services website at:

<https://humanservices.arkansas.gov/divisions-shared-services/developmental-disabilities-services/ces-waiver/>

Questions? Contact **Rebecca Tipton** or **Latoya Robinson** or **Misty Boyd** (program directors) during business hours at:



rebecca@myersdavis.com



870-613-5900



latoya.robinson@myersdavis.com



870-612-7113



misty.boyd@myersdavis.com



870-806-4939





# THE MD QUARTERLY NEWS REPORT



## Pre-ETS

The Pre-Employment Transitions Services (Pre-ETS) is a 3 Year Program for Sophomores, Juniors & Seniors in High School operated through Arkansas Rehabilitation Services (ARS). It is a class-based program focusing on Career to Work education. Students receive Class Credit toward Graduation for taking the class. Classes are taken during school hours, every-day during school week, for 1 or 2 class periods based on each high school served.

To Qualify for the Program: Students need to have a 504, IEP, or Doctors note of medical diagnosis such as diabetes, anxiety, depression, ADHD, Crohn's disease, or any diagnosis that hinders the student. Students receiving mental health services are also eligible.

The Transitions Career to Work Education Class will teach students life skills, communication skills, job skills, job exploration, job training, career interests, personality assessments, coping skills, transitioning from high school into the workforce/trade school/college, and so much more.

As part of the curriculum for the program, the Myers-Davis Educators & Job Coaches will assist the students in finding jobs to match their abilities and interests within the school system. And if certain jobs are available outside the school system and in the students' community, job coaches will assist the student in training and applying for those jobs. Students will be paid the current minimum wage rate thru Myers-Davis Life Coaching. Participation in paid work-based learning activities **will not affect SSI/SSDI benefits when reported properly**. Myers-Davis will assist you in reporting income to Social Security.

Myers-Davis serves the following schools in North Central Arkansas:

- Rosebud
- Pangburn
- White County Central
- Midland
- Concord
- Mountain View
- Southside
- Cedar Ridge
- Hillcrest
- Cave City
- Melbourne
- Highland
- IZARD County Consolidated (ICC)
- Mammoth Spring

Questions? Contact **Charity White** (program director) at:



[charity@myersdavis.com](mailto:charity@myersdavis.com)



870-307-9926





# THE MD QUARTERLY NEWS REPORT



## Employment Services

Myers-Davis is statewide vendor for the Employment Services program offered through Arkansas Rehabilitation Services (ARS) (a division of Workforce services). This program provides Competitive Integrated Employment (CIE) Service to adults with disabilities. This includes a discovery process that helps the person recognize their employment interests. Each person enrolled receives one-on-one support from our Program Director through Supported Employment, Job Placement, and/or Individual Job Coaching. This powerful program can help the person with a disability gain knowledge on the application process and the interview process, plus skills on retaining the job that they were hired for.

Questions? Contact **Kari Jones** (program director) at:



kari@myersdavis.com



870-806-4943

You can also learn more and apply for services from the Arkansas Rehabilitation Services' Field Services webpage:  
<https://dws.arkansas.gov/ar-rehabilitation-services/field-services/>

Or Scan this  
QR Code to  
access the  
ARS website







# THE MD QUARTERLY NEWS REPORT



## Skills Training Center

Myers-Davis has established a vocational/life skills training center in Batesville, Arkansas designed to provide training to individuals with developmental and/or behavioral disabilities in life skills, job skill development, and community transition services. The goal of the training center is to assist adults with disabilities to achieve maximum independence and productivity. Training will be provided on life skills, vocational/job skills, independent living skills including community integration, self-advocacy, job exploration, work readiness, and work simulations. Education methods include classes, guest speakers, job simulations, and eventually prospective employment provided for which individuals will be paid.

Topics for training may include any of the following:

- Educational/Vocational Training
- Employment
- Resource and Medication Management
- Self-care
- Household Maintenance
- Budgeting/Money Management
- Health
- Wellness
- Nutrition
- Socialization
- Community Integration

Questions? Contact **Heather Keirn** (program director) at:



[heather@myersdavis.com](mailto:heather@myersdavis.com)



870-569-1052





# THE MD QUARTERLY NEWS REPORT



## Ticket-to-Work

Ticket-to-Work exists to assist any individual who has a disability and wishes to return to work, by acquiring a “Ticket” for protection of their benefits. As a Ticket to Work Employment Network, we provide Social Security disability beneficiaries (persons who receive SSI or SSDI) age 18 through 64 job-related supports. Services offered may include job coaching, job counseling, training, benefits counseling and job placement. When participating in the Ticket Program, the individual works with their EN to reduce or eliminate their dependence on SSDI and/or SSI cash benefits.

**Social Security has many Work Incentives designed to fit a plethora of individual situations.**

**We’re here to help you! Questions?**

**Contact: [Debbi Morgan](#) (Work Incentive Practitioner) or [Lacy Mitchell](#) (Ticket-To-Work Deputy) during business hours at:**



[debbi.morgan@myersdavis.com](mailto:debbi.morgan@myersdavis.com)



720-885-0124



[lacy.mitchell@myersdavis.com](mailto:lacy.mitchell@myersdavis.com)



870-219-7269





# THE MD QUARTERLY NEWS REPORT



## Quality Assurance

A few months ago, we welcomed a new 'Quality Assurance Compliance Officer: Denice Melton. She brings years of experience as a Paraprofessional at Southside School District Preschool, working her way up to Assistant Director there in 2011. She later gained some experience working as a Developmental Therapy Assistant before starting her most recent job at The Children's Clinic in Batesville, AR. We are so proud she has chosen to be a part of our team here at Myers-Davis!

The Quality Assurance Department will begin doing around 2-3 'Personal Outcome Measures' interviews a month with the people that receive support. 'Personal Outcome Measures' is a registered trademark concept developed by CQL (The Council on Quality and Leadership) to identify and measure outcomes related to a person's quality of life. It is a meeting or interview-style process with a person we serve and/or a person that supports the person we serve. Data collected in interviews allows for analysis of trends and planning for positive changes (whether that be in services or natural supports or something else). QA is beyond excited to start this, with the hope that we will further improve our Waiver care!

- **Magan Rogers**
  - Office: 870-569-1994
  - Cell: 870-613-4424
  - Email: magan@myersdavis.com
- **Denice Melton**
  - Office: 870-569-1052
  - Email: denice.melton@myersdavis.com





# THE MD QUARTERLY NEWS REPORT



## Positive Behavior Support

Positive Behavior Support Plans are for people who have disabilities, assisting them in enjoying a normal life and helping them overcome the challenges that hinder them from being/becoming independent. When making these plans, the values to be considered are respect for the individual, person-centered planning, treating all people with dignity, and making sure the person is not being abused, neglected, or subjected to unnecessary restrictions or punishments. These individualized plans are proactive and based on an understanding of the function of the behavior, using a team-based planning approach.

We are excited to announce a partnership with Central Arkansas Disability Services, Inc., whereby we will serve as consultants for a certification curriculum to become trainers in “Developing and Implementing a Positive Behavior Support Plan” for the state of Arkansas; the core goals of which are to enhance individual well-being, prevent the occurrence of challenging behaviors, and promote the development of social/adaptive skills needed to improve the an individual’s quality of life. The curriculum has now been approved by the Arkansas Department of Human Services, Division of Developmental Disabilities Services.

**We’re here to help you! Questions?**

**Contact: Dr. Ann Webb or Rita Wycough or Kimberly Cervantez**  
during business hours at:



[ann@myersdavis.com](mailto:ann@myersdavis.com)



870-569-5292



[rita@myersdavis.com](mailto:rita@myersdavis.com)



870-569-5293



[kimberly@myersdavis.com](mailto:kimberly@myersdavis.com)



559-646-4549



# THE MD QUARTERLY NEWS REPORT



## Human Resources

Our Human Resources department is delighted to serving our team and meeting their needs. We exist to help the whole team of Myers-Davis Life Coaching & Disability Services understand their benefits of working with us. We also work diligently keeping everyone's employee record in compliance with state licensure standards. We are continually updating our training materials and processes for our employees, so be sure to watch for updates here and there. We also do an annual update of all policies and our Handbook. Please be sure to watch for those updates coming soon.

Our team currently consists of:

Don Gregory - HR Director

Amie McBride - HR Administrator

Jon Branscum - HR Specialist

Marjorie Green - HR Assistant

Alexis Whitley - Administrative Assistant to HR

Lisa Hill - Payroll Director

Monica Freeman- HR Specialist

Holly Treadway- HR Specialist

To get in touch with our Human Resources department, you can send an email to: [hr@myersdavis.com](mailto:hr@myersdavis.com) or call the main office number at (870) 569-1052.





# THE MD QUARTERLY NEWS REPORT



## Upcoming Events



**JULY 12 - MYERS-DAVIS SUMMER SOCIAL 2025: CANDY LAND CRAZE @ NEW MOON VENUE- 134 CR 755, JONESBORO, AR 72401 FROM 4:00 PM TO 6:00 PM**



**JULY 26 - AG FOR AUTISM- COMMUNITY FEST 2025 @ HARMONY GARDENS IN JONESBORO, AR FROM 10:00 AM TO 2:00 PM**



**SEPTEMBER 20 - MYERS-DAVIS SOCIAL 2025: CANDY LAND CRAZE @ VETERANS PARK EVENT CENTER IN CABOT, AR FROM 4:00 PM TO 6:00 PM**

## DID YOU KNOW?

We have a [Human Rights Committee](#) dedicated to serving your needs! What is a Human Rights Committee? It's a team of people who recognize the importance of the individual rights of a person with disabilities. This team works together to review any restrictions of rights and prevent any future rights restrictions. If you feel like someone you support is experiencing a restriction on any of their rights, you can always present it to the Human Rights Committee for them to look into.

The committee's email address is:  
[rightscommittee@myersdavis.com](mailto:rightscommittee@myersdavis.com)

## Resources to Keep You Updated!

1. [Wirecutter](#): They have a comprehensive guide on smart assistive devices that can help with daily tasks, communication, and independence.
2. [Thrive With Paralysis](#): This site regularly posts about new adaptive equipment, such as motorized stair-climbing wheelchairs and hybrid wheelchair-walkers.
3. [Adaptive Living Aids](#): They offer information on various adaptive devices, including mobility aids, communication devices, and software for visual or hearing impairments.



# THE MD QUARTERLY NEWS REPORT



## Stay in the Know!



Web: [www.myersdavis.com](http://www.myersdavis.com)



Facebook: @MyersDavisLC



Instagram: @myersdavislc



YouTube: @myersdavislcDs



LinkedIn: @myers-davis-lcDs

## Right of the Quarter

# The Right To Resources

## Topic of the Quarter

### Individualized Education Program



A formal plan covered by The Individuals with Disabilities Education Act (IDEA) that details the special education services and supports a school will provide to meet the unique needs of a student with a disability. Includes specially designed instruction.

VS

### 504 Plans



A formal plan covered by Section 504 of the Rehabilitation Act of 1973 for how a school will remove barriers so a student with a disability can learn alongside peers in general education. Doesn't include specially designed instruction.





# MYERS-DAVIS QUARTERLY NEWS REPORT



## COOKING CORNER

### One Pan Alfredo Pasta

- 1 box of fettuccine noodles
- 1 stick of butter
- 2 tablespoons avocado oil
- 1 cup heavy cream
- ½ cup grated parmesan cheese
- Salt and pepper to taste

1. Cook the pasta according to package directions.
2. Warm the butter and cream in a saucepan or skillet. Season with salt and freshly ground black pepper.
3. Grate the parmesan cheese and place half of it into a large serving bowl. Pour the warm butter/cream mixture over the top.
4. Drain the pasta and immediately pour it into the bowl. Toss a couple of times, then sprinkle in the other half of the parmesan. Toss to combine, thinning with pasta water if necessary.
5. Serve immediately as a main course or accompaniment to meat or salad. Delicious!

### Quote of the Quarter

“Your success and happiness lies in you. Resolve to keep happy, and your joy and you shall form an invincible host against difficulties.”

—Helen Keller

What would

**YOU**

like to see on the  
**Myers-Davis Newsletter?**

email:

marketing@myersdavis.com  
with Newsletter ideas

# REBUS PUZZLES

---

1.



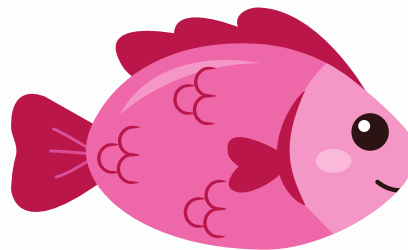
2.



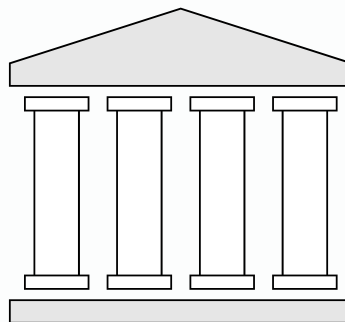
3.



4.



5.





# REBUS PUZZLES

---

1. Light House

2. Snow ball

3. Kiwi fruit

4. Star fish

5. Caterpillar





WE ARE  
**MYERS-DAVIS**

